



AQUA PLATINUM

SWIMMING POOL DESIGN & BUILD



CO M P A N Y P R O F I L E

MISSION STATEMENT

“Our mission is to provide our employees with an honest and helpful working environment, where every employee, individually and collectively, can dedicate themselves to providing our customers with exceptional workmanship, extraordinary service, and professional integrity. Our commitment to this mission will allow Aqua Platinum Projects to become not only the premier aquatic leisure service provider and builders but also innovators within our industry setting standards beyond the reach of our competitors”.

I N T R O D U C T I O N

Aqua Platinum Projects offer a unique approach to swimming pool design and construction and by employing highly talented individuals with vast knowledge and expertise Aqua Platinum are repeatedly completing projects to the highest standards to consistently exceed client expectations.

APP is at the forefront of the wet leisure industry producing and utilising the most detailed designs, highest quality materials and ever-evolving construction methods to ensure that the company is always one step ahead of the rest of the industry providing only the best quality and service available.

We pride ourselves on the strength of the team at Aqua Platinum, from our experienced engineers and project management teams to our designers and highly knowledgeable consultancy team.

TESTIMONIALS

“I looked at several companies to design and build the basement area of this property. APP’s unique approach and professionalism stood out from the crowd and the result is outstanding”

PAUL BRIGHT, INVESTOR & DEVELOPER OAKBOURNE LLP

“Aqua Platinum has provided our luxury home in Cap Ferrat, France, with great quality installations and attentive customer care. They offer the personally tailored and unique creations that our premium clients here at Veyron Bespoke Developments require.”

VEYRON

“We collaborated with Aqua Platinum to design and build 3 outdoor tiled pools that made the most of the spectacular view, incorporating a safe family environment for the pool cover.”

TIM BLYTHE QS, MILLGATE HOMES

“Aqua Platinum delivered a superb project, from extensive structural work through to the final decorative touches. Constructing a swimming pool with a movable floor in an 18th century heritage building was a particular technical challenge. Aqua Platinum’s relationships with fine Italian makers of fittings and furnishings were an added bonus. The working relationship was a pleasure throughout, and we are delighted with the outcome.”

CHARLES & RENATA JON SHER

“Aqua Platinum provide a high quality design and installation service for bespoke swimming pools and we have worked with them on a number of exciting and successful projects.

As architects and interior designers it is refreshing to work alongside a creative pool company who can help realise our concepts with enthusiasm and technical design support to ensure that our vision is delivered on site.”

MAP ARCHITECTURE & INTERIOR DESIGN

CLIENTS





DESIGN &
BUILD

PROJECT:

Headland Hotel

CLIENT:

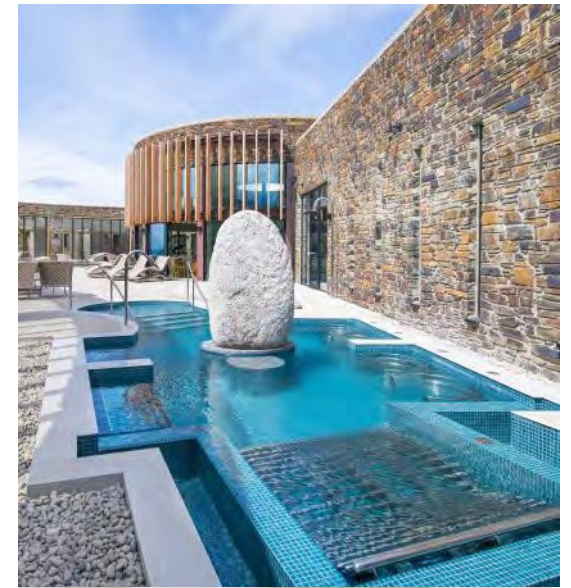
Headland Hotel

PROJECT BRIEF:

The Aqua Club includes a 25-metre pool, hydrotherapy pool, children's pool complete with air pads, jets and mushroom, an outdoor vitality pool, outdoor spa pool and edge pool that over looks the Atlantic Ocean.

CHALLENGE:

Several key architectural design features of the scheme have been integrated to the swimming pool designs, needing bespoke solutions based on precise design calculations to deliver the desired outcome.





DESIGN &
BUILD

PROJECT:

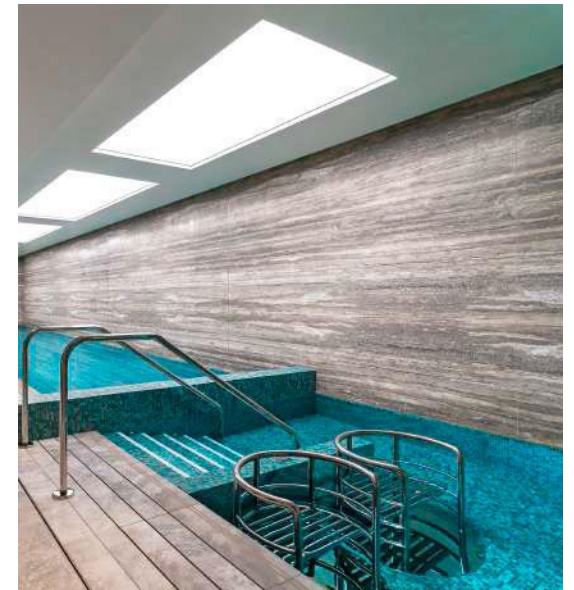
Auriens, Dovehouse

CLIENT:

Multiplex

PROJECT BRIEF:

The resident's wellness facilities include a 15-metre deck level swimming pool with a bespoke triple slot detail for the level deck trough, complete with parallel secondary drainage slots to pick up excess surface water. Our designers thoroughly thought out the strategy to deliver this detail which included bespoke stainless steel supporting frames, ultimately achieving a crisp and clean linear aesthetic. The trough continues seamlessly through to the vitality pool which includes two air massage recliners and a large stainless-steel bench for residents to enjoy.





DESIGN
CONSULTANCY

PROJECT:

Aykon Nine Elms

CLIENT:

Wanda group/Multiplex

PROJECT BRIEF:

Aqua Platinum have been appointed to design the highly anticipated leisure facilities at the 'Versace Towers' Aykon Nine Elms, to include the visually stunning swimming pool with luxury high-end finishes, bespoke spa, sauna and steam room all housed on the 24th floor of the property. Designing this project has already brought many challenges including designing with a remote plant room, the bespoke finish requirements and designing cutting edge facility that fits with the Versace designed building and apartments.





DESIGN &
BUILD

PROJECT:

Langley Park

CLIENT:

Brookfield Multiplex

PROJECT BRIEF:

Aqua Platinum have been appointed to design the deluxe wellness centre at what aspires to be the most exclusive hotel in Berkshire with the best spa facilities in the UK. Main features include a subterranean infinity edge swimming pool, infinity edge vitality spa with water features, VIP spa suite, female vitality suite, and outdoor pool with deluxe black granite finishing.





DESIGN &
BUILD

PROJECT:

Prince of Wales Drive

CLIENT:

Berkeley Group/St William

PROJECT BRIEF:

Aqua Platinum were appointed to design, build and complete fit out of the resident's amenities spa complex to include a 17m basement swimming pool, sauna, vitality pool and steam room, complete with associated changing and treatment rooms as part of a £2m contract with the Berkeley Group.





DESIGN &
BUILD

PROJECT:

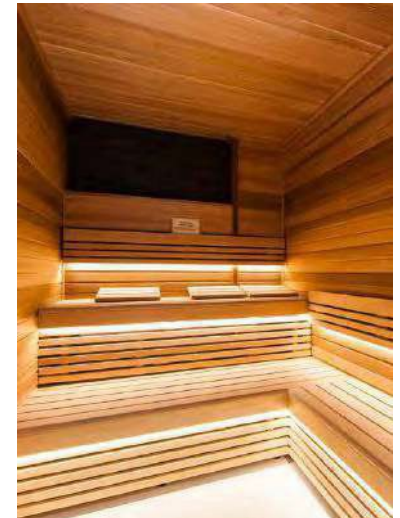
London Dock

CLIENT:

St George PLC

PROJECT BRIEF:

Aqua Platinum were appointed for swimming pool design and build for an indoor swimming pool complete with glamorous mosaic feature wall and showers, bespoke vitality pool, two bespoke saunas and a steam room for a prestigious resident's amenities space in the St Katherine's Dock area of London.





DESIGN &
BUILD

PROJECT:

Parklands

CLIENT:

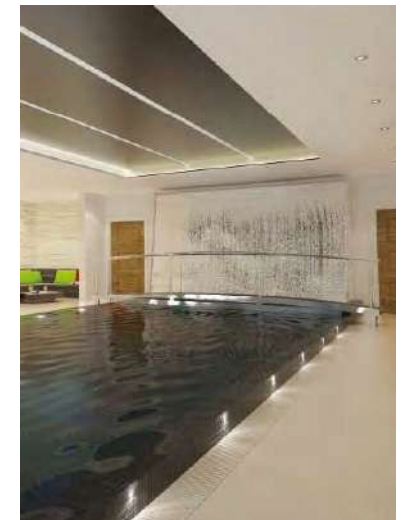
Veyron Developers

PROJECT BRIEF:

Aqua Platinum were appointed as the design and build contractor for a high-specification residential spa complex with water feature, swimming pool and spa area in basement of the residence.

CHALLENGE:

The pool design is the first of its kind using infinity edges on 270 degrees of the pool structure raised from the ground. Stealth automatic cover was built into a cave. Integrated water feature and outdoor spa to mirror the swimming pool were incorporated into the design in addition to bespoke stainless steel bridge and cascading water feature.





DESIGN &
BUILD

PROJECT:

Chelsea

CLIENT:

Finchatton

PROJECT BRIEF:

Design and build a high-tech insulated panel pool structure that delivers seamless transition from interior wall to pool wall on 3 sides with internal massage jets.

CHALLENGE:

Deep basement with limited access and limited plantroom space.





DESIGN &
BUILD

PROJECT:

Corniche

CLIENT:

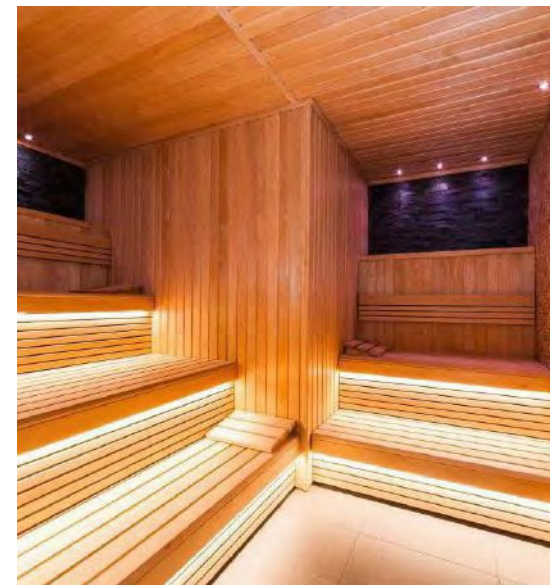
St James

PROJECT BRIEF:

To design and build an infinity edge swimming pool and infinity edge vitality pool along with steam room and sauna within an incredible new property development with The Berkeley Group.

CHALLENGE:

The swimming pools are situated on the first floor of this new property development with the plantroom based two floors below. APP have designed and built this project to the highest standard to utilise the state of the art dosing and filtration systems in this complicated build.





DESIGN &
BUILD

PROJECT:

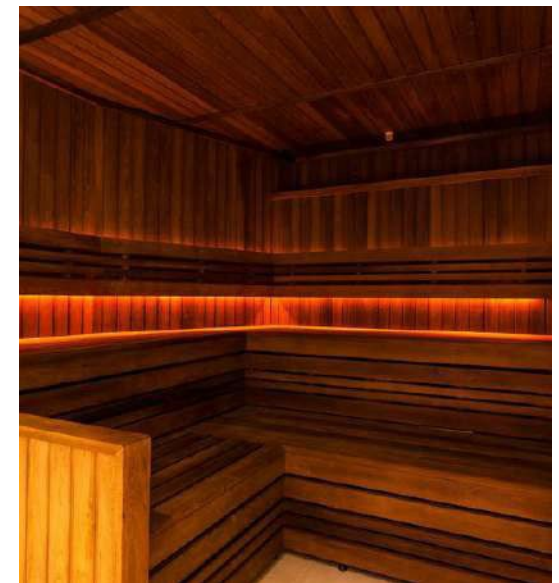
The Strand

CLIENT:

Berkeley Homes St Edward

PROJECT BRIEF:

We were appointed to design and build the luxurious wellness facilities for the prestigious residential development located on the world famous The Strand. The scheme consists of a stunning indoor deck level swimming pool which has been constructed using sprayed concrete and finished in a high quality mosaic, in addition to a vitality pool, bespoke sauna and steam rooms and upper and lower level complex plantrooms to accommodate the balance tank and high-tech control systems.





DESIGN &
BUILD

PROJECT:

Belgravia

CLIENT:

Private

PROJECT BRIEF:

Aqua Platinum were appointed to design and build a high-quality pool, spa, steam, sauna, plant room and pipework scheme for use within a luxurious property in Knightsbridge. The design features stunning marble interior used throughout the pool and spas, complimenting the magnificent property surroundings.

The design phase of this project became the most important as the full scheme was very complex and the design had to include a combination of elements to be coordinated within the plant room. The plant room section of this design plan involved many points to consider, such as; the initial building structure, water, gas, electrical points, air-conditioning & vents, communications and I.T.





DESIGN &
BUILD

PROJECT:

Knightsbridge

CLIENT:

EE Smith

PROJECT BRIEF:

Aqua Platinum have been appointed for the design and build of this prestigious steam and integrated swimming pool. Working in collaboration with M&E Contractor EE Smith, the pool includes a luxurious deck level slot detail. The pool shell has been constructed from sprayed concrete and finished in the highest quality mosaic tiles. In addition, we have also constructed a stunning bespoke steam room for this particular scheme.





DESIGN &
BUILD

PROJECT:

South Audley Street

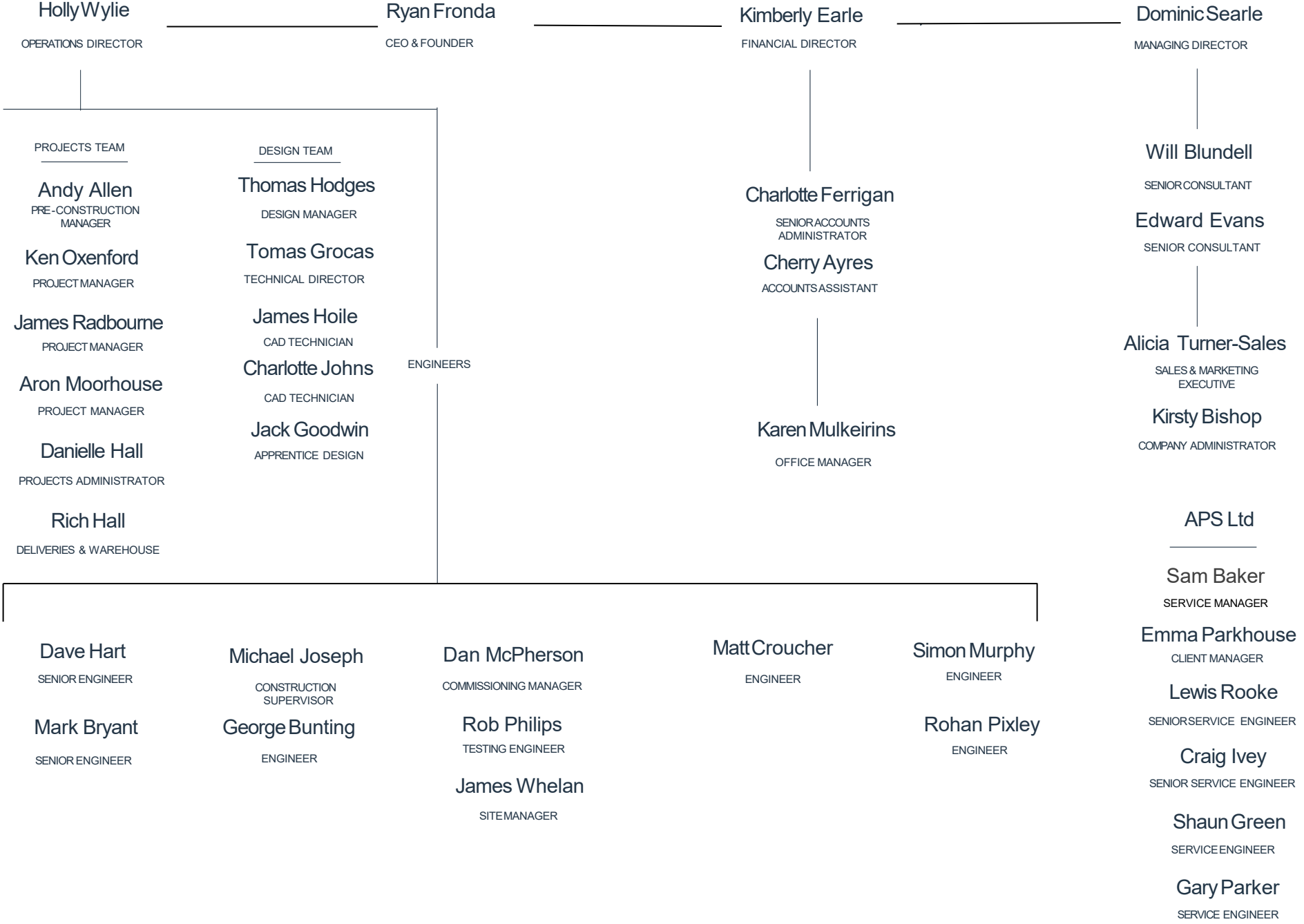
CLIENT:

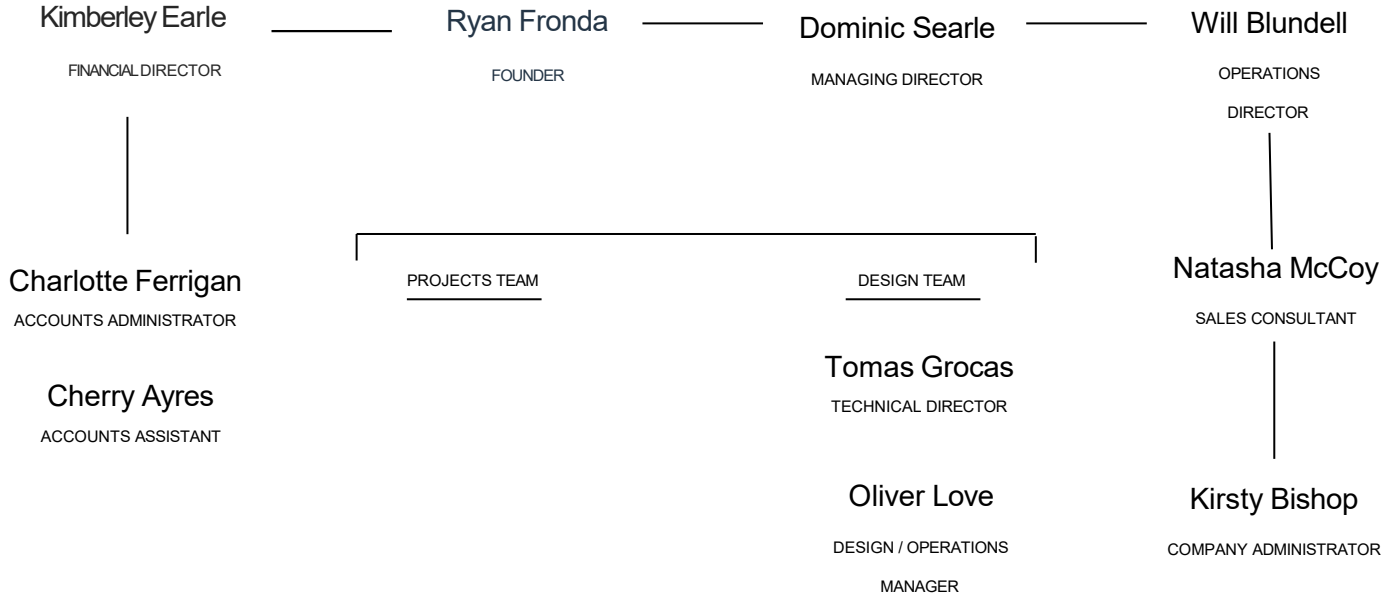
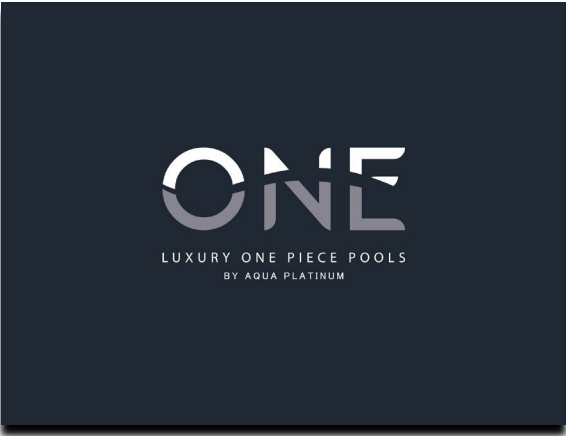
McLaren Construction

PROJECT BRIEF:

We are extremely proud to have designed and built the exceptionally high-end wellness complex within the prestigious development in Mayfair. The project consisted of a luxurious basement swimming pool with stainless steel facilities, in addition to a bespoke steam room and deluxe sauna.









Kimberley Earle
FINANCIAL DIRECTOR

Gil Ellis
MANAGING DIRECTOR

Dominic Searle
COMMERCIAL DIRECTOR

Keith Trappe
SENIOR PROJECT
MANAGER

Kieran Loy
PRE-CONSTRUCTION
MANAGER

Jamie Gregory
PROJECT MANAGER

UK POOL AND SPA AWARDS

Winner – UK Team of the Year 2021

Winner – Pool Engineer of the Year

Winner – Health and Wellness Project of the Year

Winner – Pool Contractor of the Year 2020

RunnerUp – Residential Outdoor Pool of the Year

Winner – Commercial Pool of the Year

RunnerUp – Energy Efficiency Award

Winner – Residential Indoor Pool of the Year

RunnerUp – Overseas Pool Project

Winner – Outstanding Swimming Pool Design

Winner – Residential Indoor Refurbishment

Gold Award – Pool Technician of the Year

Gold Award – UK Team of the Year

Gold Award – Residential Outdoor pool Gold

Award – Residential Indoor Refurbishment Gold

Award – Commercial Pool

HEALTH & SAFETY CERTIFICATES

SMAS

CHAS

STANDARDS OF REGULATIONS

PWTAG

ISPE

SITE SPECIFIC QUALIFICATION

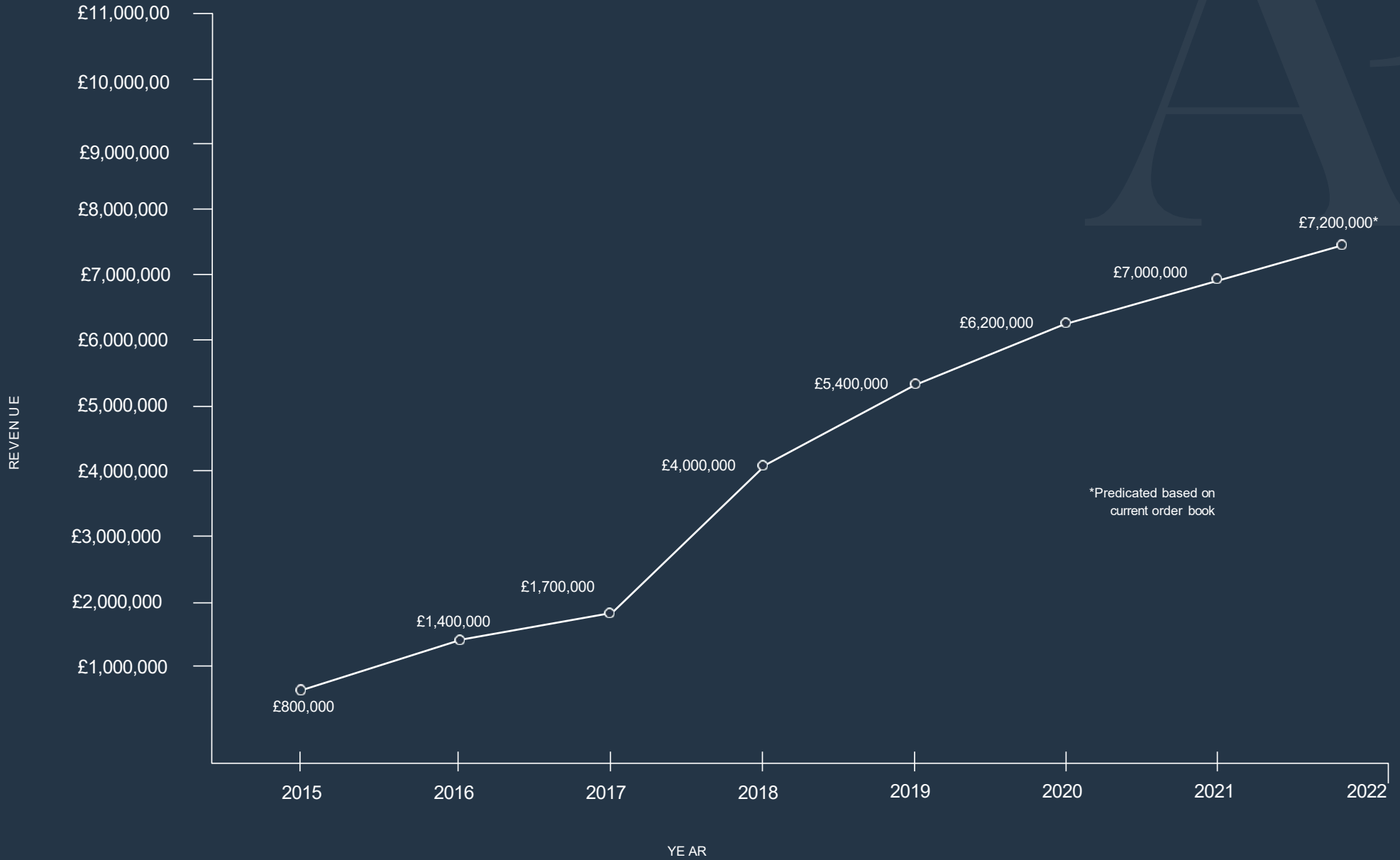
SMSTS

SSSTS

CSCS

PASMA

FINANCIALS



HEAD OFFICE

Unit 9 FulcrumFour 111 Parkstreet
SolentWay Mayfair
Fareham London
Hampshire W1K 7JF
PO15 7FT

BANK DETAILS

HSBC
Sort code: 40-04-09
Account no: 92041499
UTR Number: 83446 27301

CONTACT

Telephone: 01489896438
Email: enquiries@aquaplatinumprojects.co.uk
Website: www.aquaplatinumprojects.co.uk

INSURANCES

Professional indemnity: £5,000,000

Policy Number: PI21F810749 / PX21F129824 / FI688921

Public Liability: £10,000,000

Policy number: 100653791CSI

Product Liability: £10,000,000

Policy number: 100653791CSI

Employers liability: £10,000,000

Policy number: 100653791CSI / 25054165

Contractors all risk: £2,600,000

Policy number: 100653791CSI

